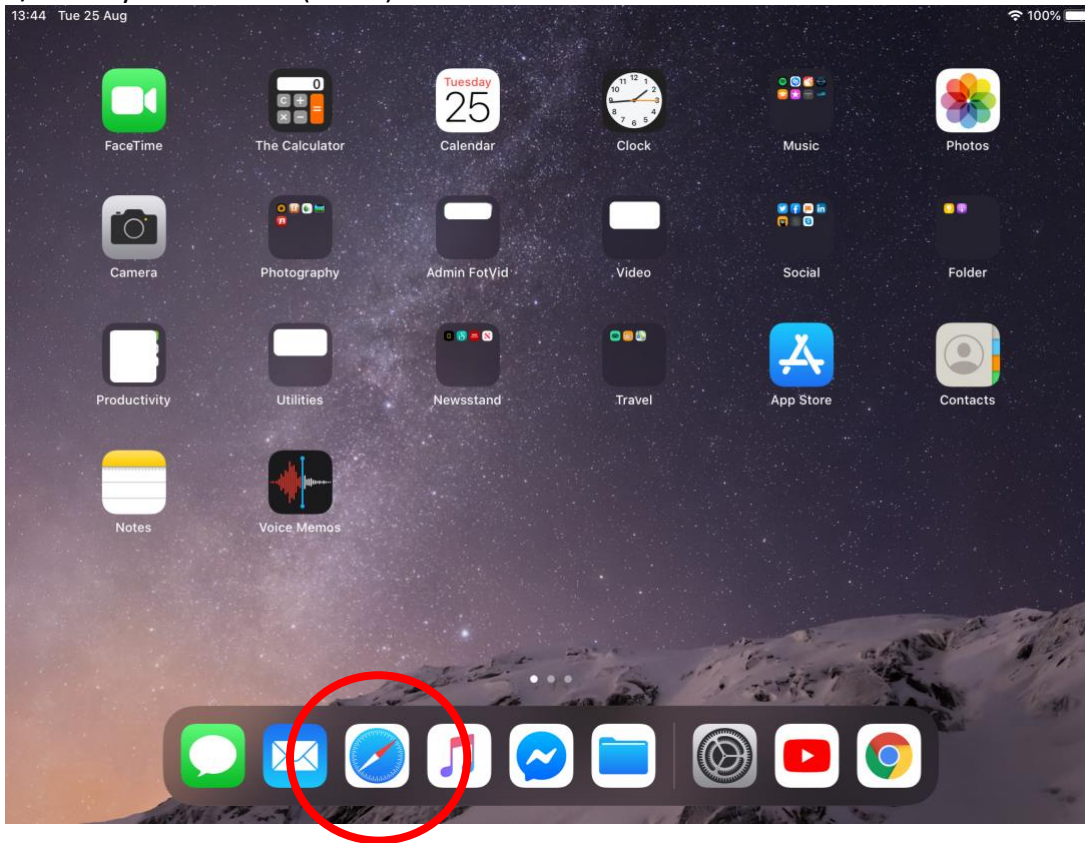
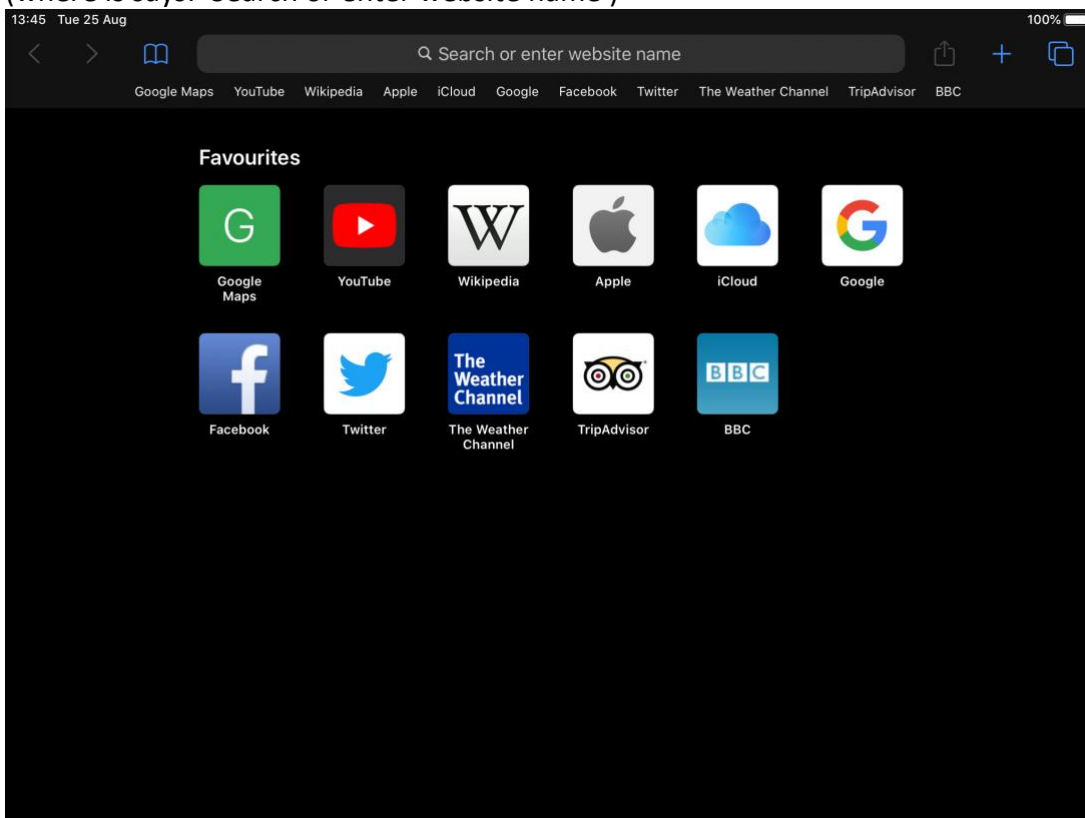


iPad: HOW TO USE YOUR SAVED BMB LOG-IN

1/ Go to your browser (Safari)

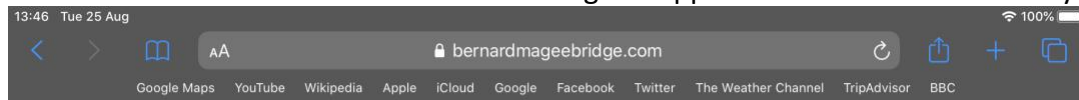


2/ Go to: bernargmageebridge.com – Type this in the top search bar (where it says: 'Search or enter website name')



iPad: HOW TO USE YOUR SAVED BMB LOG-IN

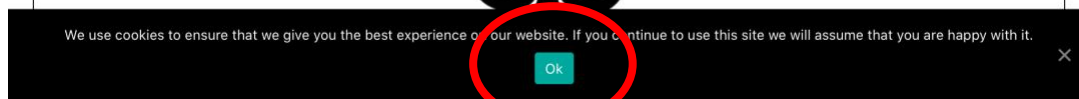
3/ At the bottom of the page (in the black bar) click the 'Ok' button
– to enable cookies on this website – message disappears when done successfully



Welcome to Bernard Magee Bridge

Members Log-In Here

If you are new to the site, please take a look at the videos below:



Welcome to Bernard Magee Bridge

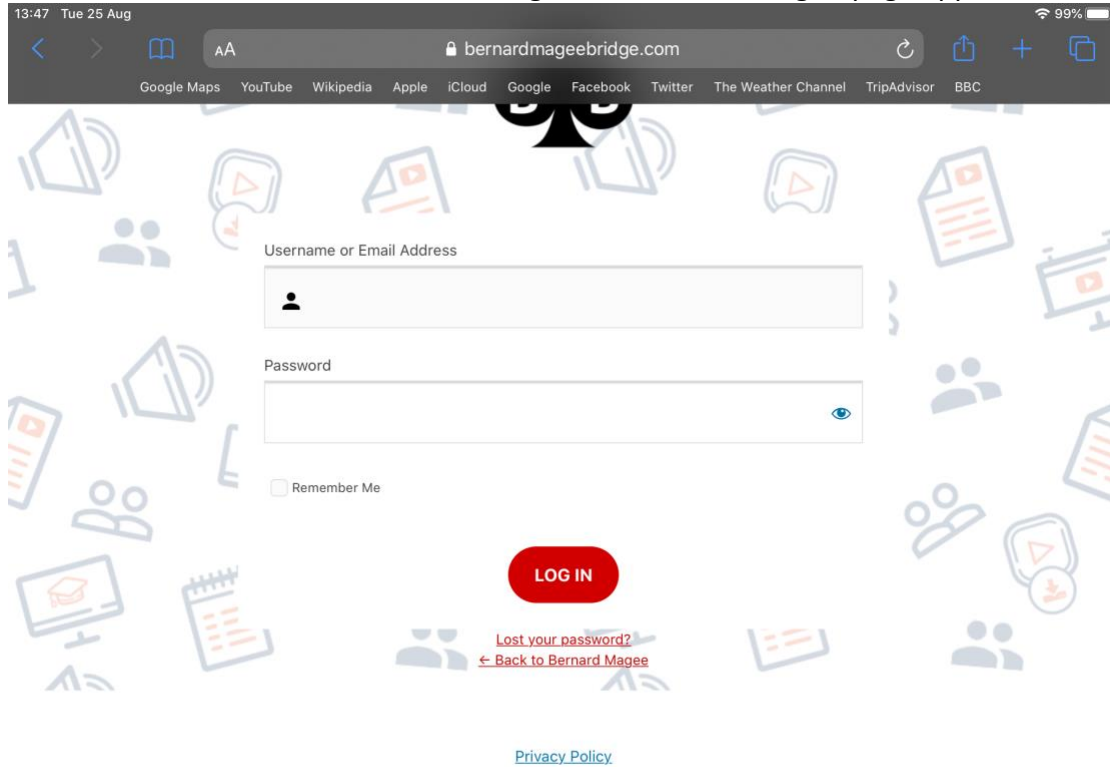
Members Log-In Here

If you are new to the site, please take a look at the videos below:

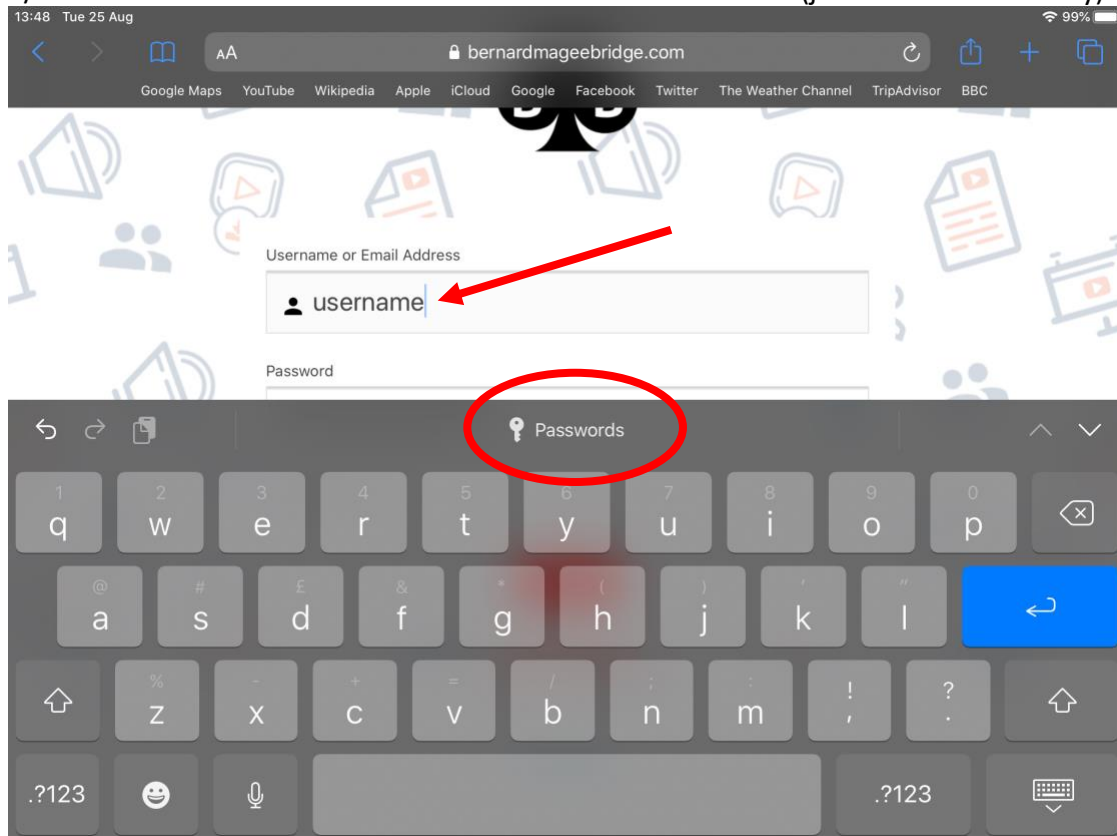


iPad: HOW TO USE YOUR SAVED BMB LOG-IN

4/ Click on the red button: 'Members Log-In Here' and the log-in page appears:

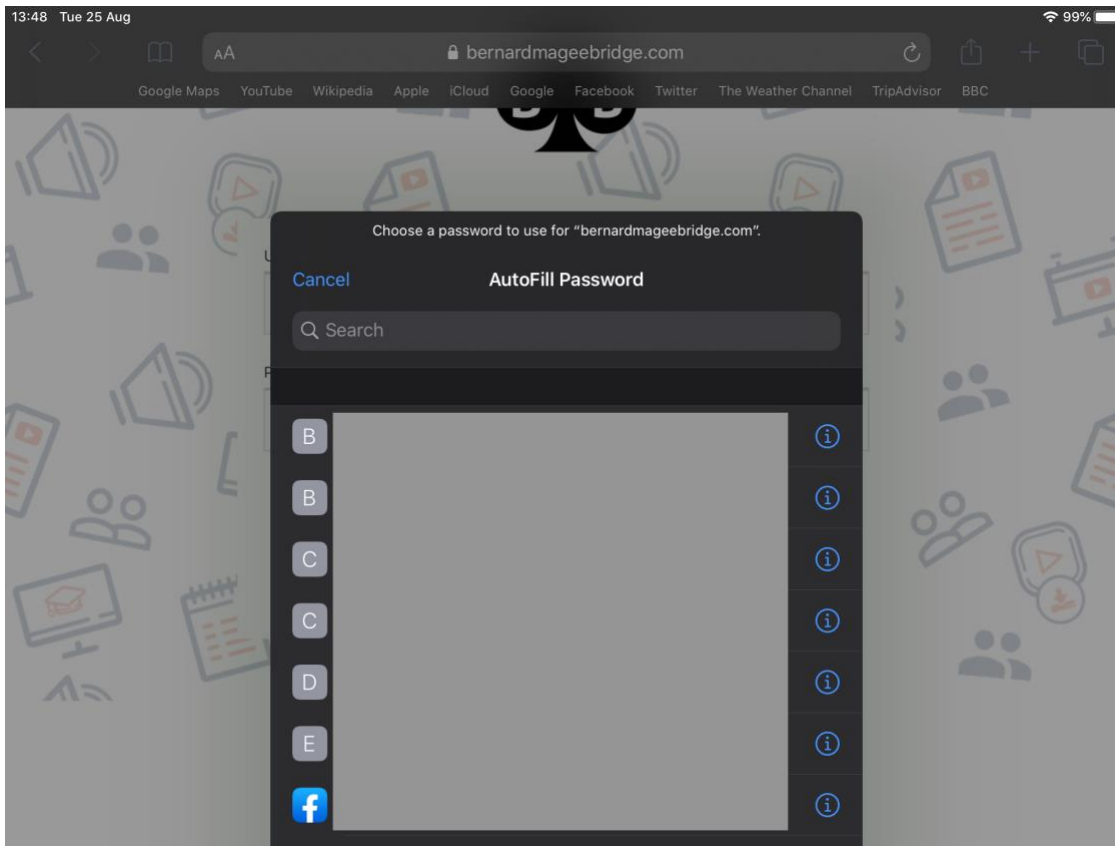


5/ Click in the 'Username or Email Address' box and the keyboard comes up on screen
6/ Click on the 'Passwords' name in the middle of the screen (just above the letter y)

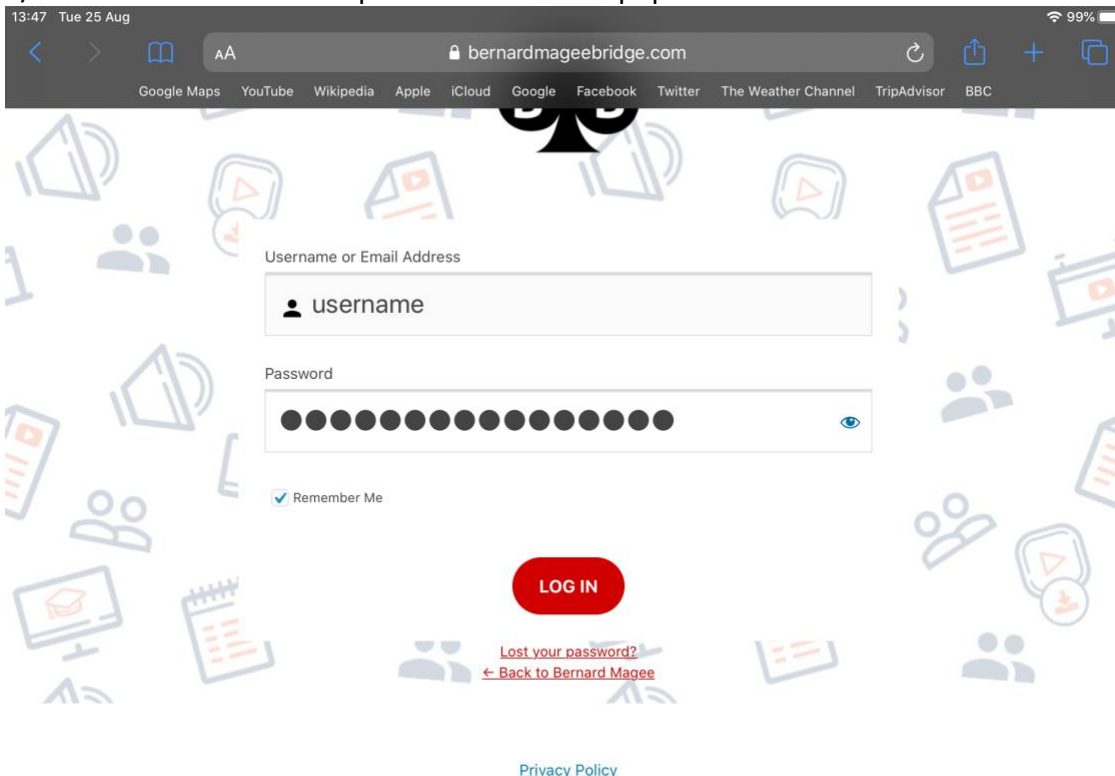


iPad: HOW TO USE YOUR SAVED BMB LOG-IN

7/ A pop-up box appears, and you can choose the BMB username & password that you saved from the list here



8/ After the username and password fields are populated click the red 'LOG IN' button



9/ You are now logged in and arrive at the Members' Area 'My Homepage'

iPad: HOW TO USE YOUR SAVED BMB LOG-IN



Helen Magee, welcome to the Members' Area

We have added a CONVENTION LIST in the HELP menu which gives two systems:
a Basic Acol system and a slightly more advanced Bernard Acol system

You can now insert a picture on the forums

We have also launched the Q-PLUS forum for chat about systems, filters and anything else

Last week's prize winners: [redacted] will be playing in this week's Teams:
Wednesday 7.30pm

Below are some useful links to help you move around the site.



YOU HAVE SUCCESSFULLY USED YOUR SAVED LOG-IN